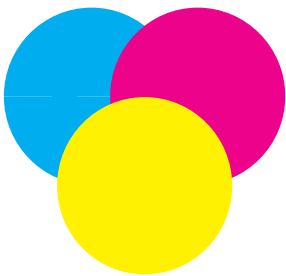
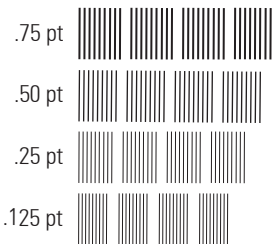


Composite Overprint and Text/Graphics Quality Test

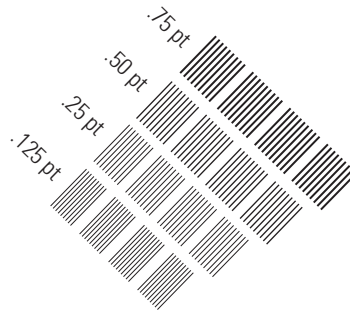
Overview: The purpose of this document is to demonstrate the Splash's composite CMYK and Spot Color overprinting capabilities as well as improved text, line art and graphics image quality. The images below highlight each capability with a visual target and description.



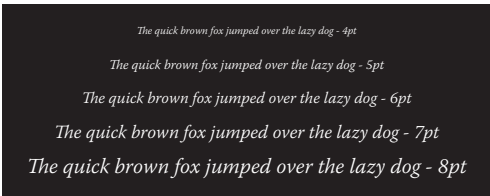
CMYK Overprinting



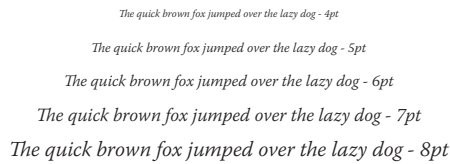
Line Art Quality



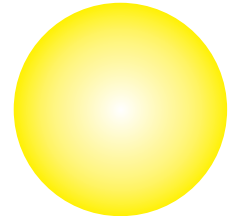
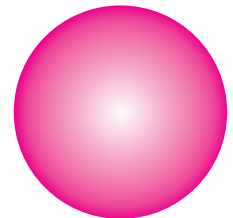
Text Quality



Text Quality



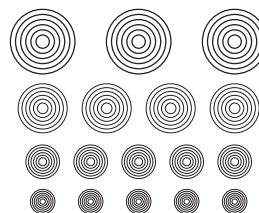
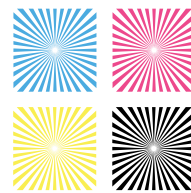
Text Quality



Gradient Smoothing



Spot Color Overprinting



Line Art Quality